

2220 De La Cruz Blvd

SANTA CLARA, CALIFORNIA



DIGITAL REALTY



Why 2220 De La Cruz Blvd?

2220 De La Cruz Blvd is one of the most sophisticated and efficient data centers in the greater San Francisco Bay area. The 360,000 square-foot facility offers a critical power capacity of 36.6 megawatts. With a density of 207 watts per square foot, it represents a new class of data center in the Northern California market.

Its flexible design includes 20 computer rooms, 12 offices and multiple staging rooms—enabling your business to scale over time.

Whether you're serving up Internet content, financial data or cloud-based services, you can't pick a better location—or a more efficient, secure and robust facility.

Building

- 36.6 MW
- 360,000 SF
- 16 acres

Power & Cooling

- Design PUE of 1.28 for Phase I at full capacity and 1.15 for Phase II annualized
- N+2 redundancy for all building systems at full capacity

Security

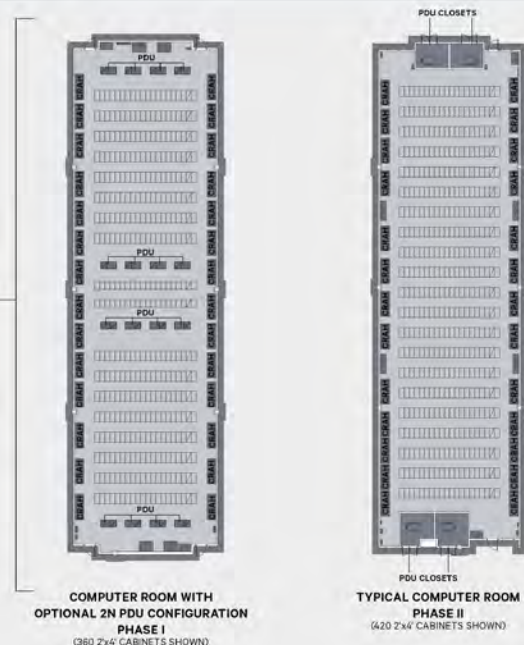
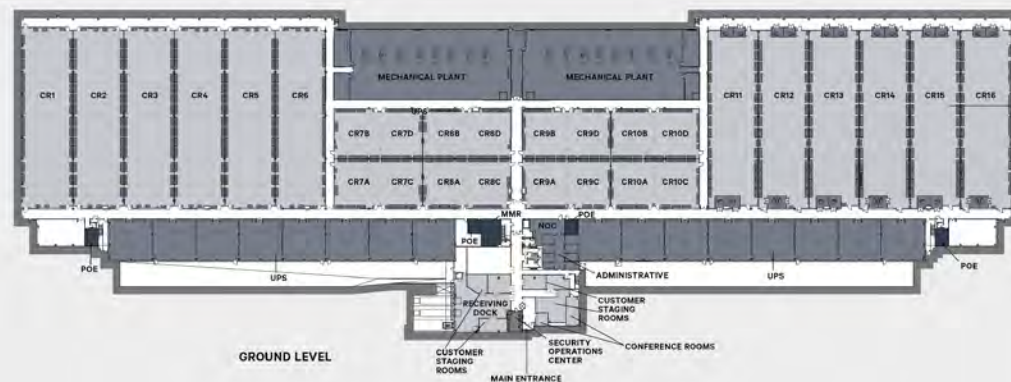
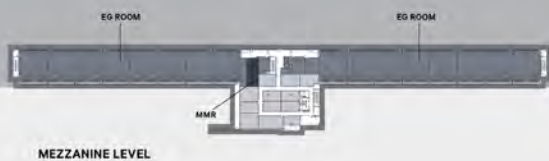
- 24 x 7 x 365 security officers
- CCTV surveillance cameras
- Two-factor authentication and biometrics access

Sustainability

- LEED Gold Certified
- Utilization of reclaimed water

Connectivity

- Carrier-neutral
- Four separate network Points of Entry (POE) with diverse underground duct banks
- Dedicated underground conduits to each computer room
- Meet-Me-Room (MMR) available



Facility Specs

Property

- Location: Santa Clara, CA
- Acreage: 16
- Building Size: 360,000 SF
- Nearest Airport: San Jose International Airport (SJC)

Building Description

- Utility Power: 60 kV
- Parking: 182 spaces
- Number of Stories: One, plus office space and engine-generator mezzanine
- Loading Docks: Four dock bays; two with dock levelers, one with scissor lift

Computer Room Specifications

- Rooms 1-6, 11-16
- Computer Room Size: 11,000 SF (average)
- Critical Power Capacity: 2,275 kW
- Rooms 7A-10D
- Computer Room Size: 2,700 SF (average)
- Critical Power Capacity: 568.75 kW

Data Center Area Description

- Computer Room Floor: 176,200 SF
- Number of Computer Rooms: 28
- Raised-Floor Height: 42", under raised-floor plenums
- Computer Room Floor-to-Ceiling Height: 15'-22"

Amenities

- Offices: 12 pre-constructed offices
- Staging: Six rooms

- Miscellaneous: Wi-Fi, conference rooms, break room and shower room with lockers

Security

- Building and Perimeter: Fully monitored by CCTV cameras and security officer patrols
- Security Officers: 24 x 7 x 365
- Access Control: Electronic security features with access card entry and dual authentication with biometric readers
- CCTV: Yes (minimum 95-day video retention)

Critical Power

- Total Megawatts: 36.6

UPS Systems

- Thirty-two 1,300 kW rotary UPS in isolated-parallel configuration
- Redundancy: N+2, each phase

Generators

- Thirty-two 2,250 kW diesel-engine generators
- Redundancy: N+2, each phase

Onsite Fuel Capacity

- Storage Tanks: Four 50,000-gallon underground diesel-fuel storage tanks
- Fuel Run Time: Minimum 55 hours

Heat Rejection Systems (HVAC)

- Phase I: Eight centrifugal chillers, each with 1,080-ton capacity

- Phase II: Eight centrifugal chillers and heat exchanger lineups, each with 1,020-ton capacity
- Redundancy: N+2, each phase
- Chilled-Water Storage: Two
- 500,000-gallon above ground chilled-water storage tanks

PDUs

- Voltage: 208/120 V Phase I,
- 415/240 V Phase II
- Redundancy: N+1 Phase I, 2N Phase II

Communications

- POE: Four separate network POEs with diverse underground duct banks leading into the facility
- Conduits: Dedicated underground conduits to each computer room
- Multiple Carriers: Digital Realty is carrier-neutral
- Meet-Me-Room: Available

Fire Protection

- Double interlocked pre-action sprinkler system with VESDA monitoring system standard

FOR LEASING INFORMATION

For a tour of our facility, complimentary IT infrastructure consultation or sales information, call or email us at:

SALES

P (877) 378 3282

E sales@digitalrealty.com

ABOUT DIGITAL REALTY

Digital Realty supports the data center and colocation strategies of firms across its secure, network-rich portfolio of data centers located throughout North America, Europe, Asia and Australia. Digital Realty is uniquely positioned to deliver interconnectivity with a complete range of solutions on a global scale. Our customers trust the Digital Realty team to combine unparalleled collaboration, network-dense interconnection and real estate acumen to realize the unique power of community - from one rack to hyperscale - across the globe.



DIGITAL REALTY