



# Copenhagen data centre campus

Connect, transact and grow

## Welcome to Copenhagen

Copenhagen is an ideal location for running data centre solutions thanks to its green power, excellent conditions for low-energy cooling and rich presence of international fibres, which makes it possible to reach 80 percent of Europe's BNP in less than 30 milliseconds.

Our Copenhagen Campus is the best connected data centre in Denmark, offering access to more than 50 carriers & ISPs, four internet exchanges, a growing universe of global and local cloud platforms and Connected Communities.

The connectivity landscape is fast developing in the Nordics and Denmark is a perfect location for businesses to connect to North America, Ireland and the rest of Scandinavia thanks to a wide network of sea cables present in Denmark.

Compliant with the highest international standards for security, redundancy, and sustainability, our cloud and network-neutral Copenhagen campus is the best location to grow, connect and future-proof your IT infrastructure. Connect, transact and grow together with Digital Realty.



Pernille Hoffmann,  
Managing Director, Nordics

25

minutes drive from  
Copenhagen Airport

50+

fixed and mobile  
carriers, ISPs and  
CDNs

24x7

dedicated support

## Enabling valuable communities of interest to support your business

With Digital Realty's growing universe of Connected Communities we enable an interconnected hub for the world's leading businesses. For over 20 years Digital Realty Copenhagen Data Centre have enabled our customers to increase their market share, transform their services, connect their business and extend their reach into new markets.

As a leading provider of colocation and interconnection solutions, Digital Realty allows customers to seamlessly connect to cloud platforms, connectivity providers and enable connection to a valuable Connected Communities of interest. This community is an organic IT ecosystem, within the data centre, that allow our customers to manage the complexity of a modern distributed IT architecture, and to become flexible and adaptable towards the business and current needs.

With carrier points of presence (PoP) installed in the data centre and Cross Connects that can be implemented quickly, it's easy to connect to national and international carriers to suit your needs. Our connected data centre also offers dedicated and direct access to the leading cloud providers bypassing the public internet, which improves latency, security and flexibility.

## IT Service Providers

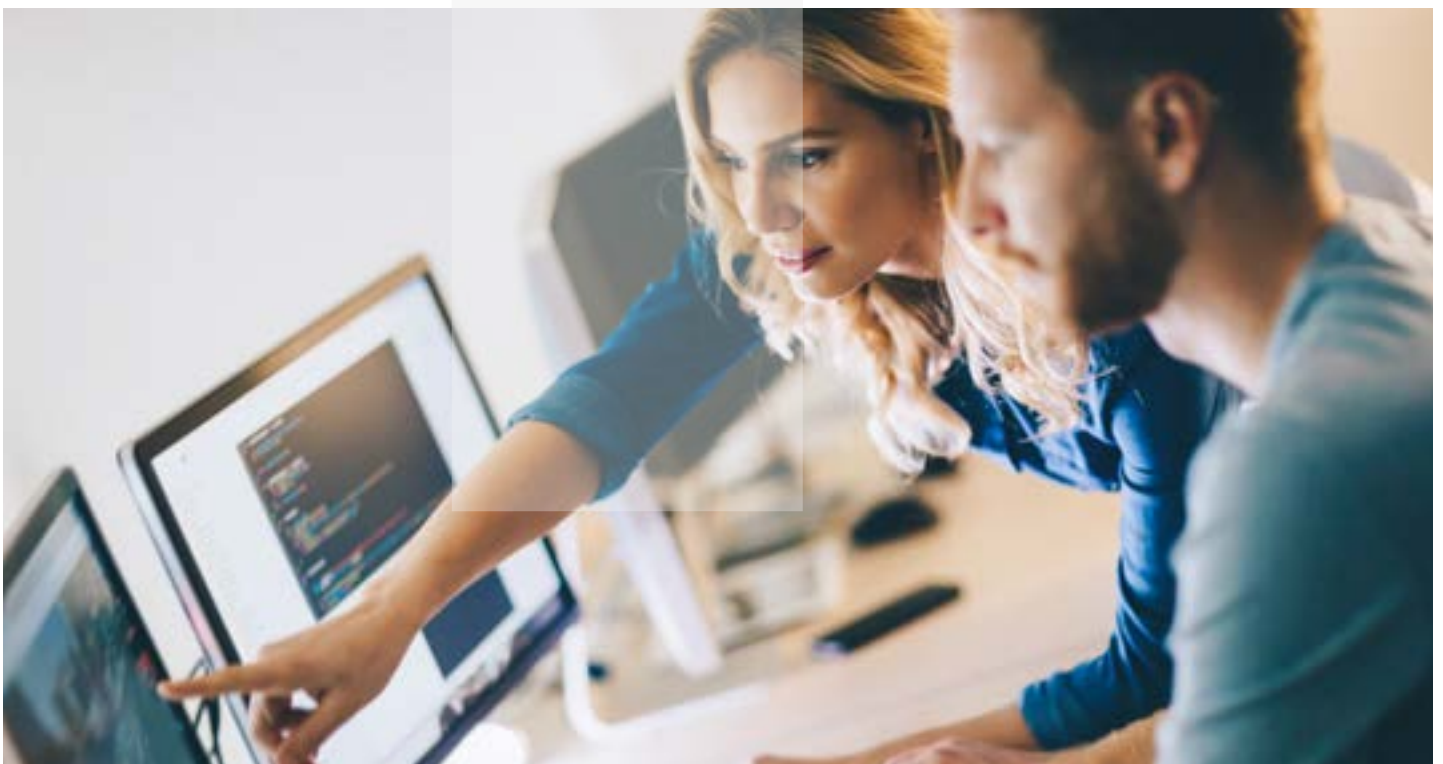
In the current digital transformation, Digital Realty is a future-proof and strategic connectivity and cloud hub for service providers and their end customers. Our data centres enable access to multiple clouds while ensuring security and compliance in an on-premises and hybrid environment. The Nordics have a strong tradition of outsourcing and, with a rich community of IT service providers present within our Copenhagen campus, Denmark is no exception. This allows IT service providers to widen their customer service portfolio, grow and increase flexibility in their customers digital transformation with the help of Digital Realty's marketplace.

## Financial services

99.999% availability, comprehensive security, and the excellent choice of low-latency connectivity attract this community to our Copenhagen campus. The community includes trading and IT platforms, FinTech businesses, hedge funds, high-frequency trading organizations, banks and insurance companies. A key factor for our customers working within, and delivering, digital financial services is a well-connected data centre partner, that provides a secure and scalable IT environment.

## Community and neutrality in Copenhagen

Situated on the outskirts of Copenhagen, our CPH data centre offers you a ready-formed community of carriers, cloud and service providers and other potential suppliers, partners and customers, all attracted by the unparalleled connectivity offering and the neutrality. Using our remote site located 12 km away, we offer the possibility to run a dual data centre set up for redundancy.



## Designed for mission-critical applications

We provide you with the peace of mind you need. When you colocate with us, you can be confident about the physical security of your systems, the performance of your infrastructure and its availability – assured with a 99.999% availability SLA.

For over 20 years we've been setting industry standards in data centre design, build, operation and management to deliver continually improving reliability, security, resilience, efficiency and performance.

Deploying mission-critical applications, such as AI and IoT at scale, places a unique demand on the data centre. It requires a high-density compute infrastructure that runs nearly continuously, a state-of-the-art-facility that can support the required power and cooling capacities and low-latency connectivity. Since 2019, Digital Realty has been selected and certified as a colocation provider for the NVIDIA DGX-Ready Data Centre program. This allows our customers to continue growing their business with the comfort of our robust, secure and powerful facilities.

## Flexible colocation solutions

We pioneered modular data centre design to enable rapid and efficient expansion.

We offer significant flexibility in what you do with your space and how you extend your footprint.

- Colocation in Cabinets, Cages and Private Room
- Rapidly installed Cross Connects and Cloud Connects
- Remote Hands and Eyes: 24x7x365 installation and maintenance
- Meeting rooms and office space

## Resilience and business continuity

Like all our data centres, Copenhagen operates in full accordance with the ITILv3 framework and has ISO 27001, ISO 22301 and SOC2 certifications. We combine state-of-the-art systems and processes to monitor and manage operations 24x7, we build high levels of redundancy and service assurance into our data centres:

- **Connectivity** - dual or triple-entry fibre from two or more carrier main routes and rapidly installed cross connects. Six physical ducts.
- **Power** - secured supply; two power feeds for all equipment, each independently equipped with UPS and generator backup with full load capacity for indefinite running.
- **Environment** - SLAs on temperature and humidity in line with ASHRAE recommendations; N+1 cooling; sophisticated water and smoke detection systems; advanced fire suppression in line with local regulations and designed for maximum safety and minimum damage.

## Connectivity

- Direct access to Microsoft Azure, Amazon Web Services, IBM Cloud, Oracle Cloud Infrastructure
- Direct access to DIX, Netnod and NL-ix
- 50+ fixed and mobile carriers ISPs and CDNs

## Community

- Connected communities of cloud platforms, hosting providers and SIs
- Diverse enterprise community ranging from small national companies to large multinationals

## Location

- 25 minutes from Copenhagen Airport
- Convenient location west of city centre
- Additional remote location 12km away

“Saxo Bank has an aggressive expansion plan for the coming years, we were looking for a partner, who could accommodate this growth plan, but at the same time provide a flexible solution, whereby Saxo Bank didn't have to commit to a major overhead.”

**Saxo Bank, Robert Smith, Vendor Manager**





## Security

The data centre is secured as a building within a building, and monitored 24x7x365 by CCTV and security patrols. There are multiple access barriers, including mantraps, contactless key cards and biometric readers. You can also add your own security systems to your cabinet, cage or private room.

## Sustainability

We use 100% renewable energy and our PUE measures are exceptional by any standards. We use free cooling and a custom cold-aisle containment solution to support higher power densities on low raised floors more efficiently, reducing the overall cooling overhead by as much as 30%.

The great supply of power from sustainable sources like hydro and wind power combined with the cold climate makes the Nordics an ideal place for building sustainable data centres. Denmark and the whole Nordic region have evolved into Europe's leaders in energy efficiency. At Digital Realty Denmark we are using 100% sustainable energy coming from hydro power, which

has the lowest possible carbon emission possible. On top of this we are able to use free cooling most of the year due to the cold climate.

In Denmark, Digital Realty has developed groundwater cooling as an energy-saving measure. Previously, cooling in the summer months had been based on traditional refrigeration machines that used a lot of power. But Digital Realty worked with the city of Ballerup to develop a groundwater-based cooling system that can replace the traditional refrigerants with geo-energy. The result is a system that, summer and winter, can always provide sufficient cooling while significantly reducing energy consumption.

## Operational excellence

- 99.999% availability SLA
- 2N or N+1 configurations for all critical systems
- 24x7 operation and monitoring

## Sustainability

- Free cooling system - Adiabatic cooling and Cold Aisle Containment design
- 100% renewable energy
- Phased modular architecture optimises PUE
- Data centres operated to the highest energy efficiency standards

“Digital Realty’s Cloud Connect service is an enabler for our hybrid cloud solutions. It gives us a fast, easy, secure way to connect our customers directly to multiple public clouds such as Azure, AWS, Oracle, IBM and others.”

**Per Frey, Vice president, KMD**



## The ideal environment for your hybrid cloud

By colocating your IT infrastructure alongside the hyperscale clouds you can overcome your networking challenges to optimise your cloud and start using your data centre as a strategic asset. Create value by efficiently deploying critical infrastructure and seamlessly connecting to a robust and growing universe of cloud platforms.

- **Security** - Avoid the vagaries of the public internet by interconnecting directly and privately to your cloud platforms
- **Performance** - Eliminate latency, jitter and bandwidth issues with guaranteed connectivity and uptime
- **Cost effective** - Reduce network costs by interconnecting to multiple clouds from a single physical connection

## Dedicated connectivity from Copenhagen campus

Within the Copenhagen data centre campus, you can reach and connect to an unbeatable set of local private clouds, SaaS and IaaS, IT service providers and international cloud platforms.

### Connect to the clouds from our data centre campus in two ways:

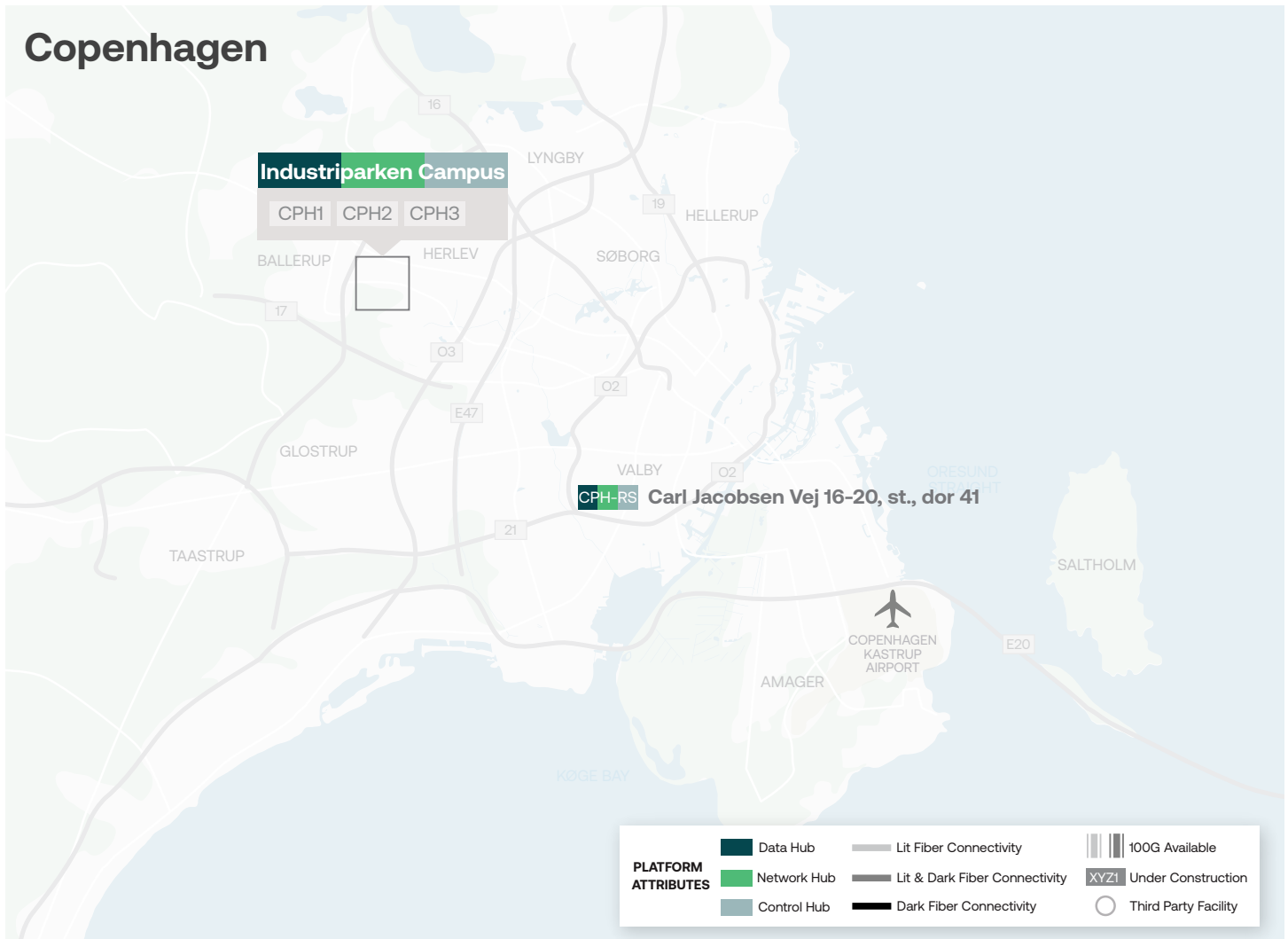
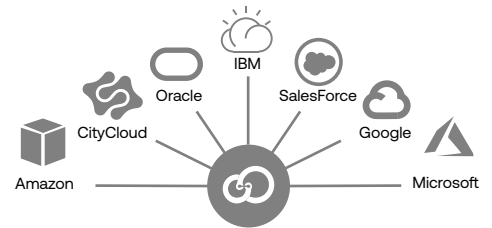
- Cross Connect to AWS Direct Connect and Microsoft Azure ExpressRoute (PoPs) and the local private clouds, directly within our facility
- Establish a dedicated connection via Cloud Connect, Digital Realty's fully automated multi-cloud platform, and access cloud platforms across all of Europe

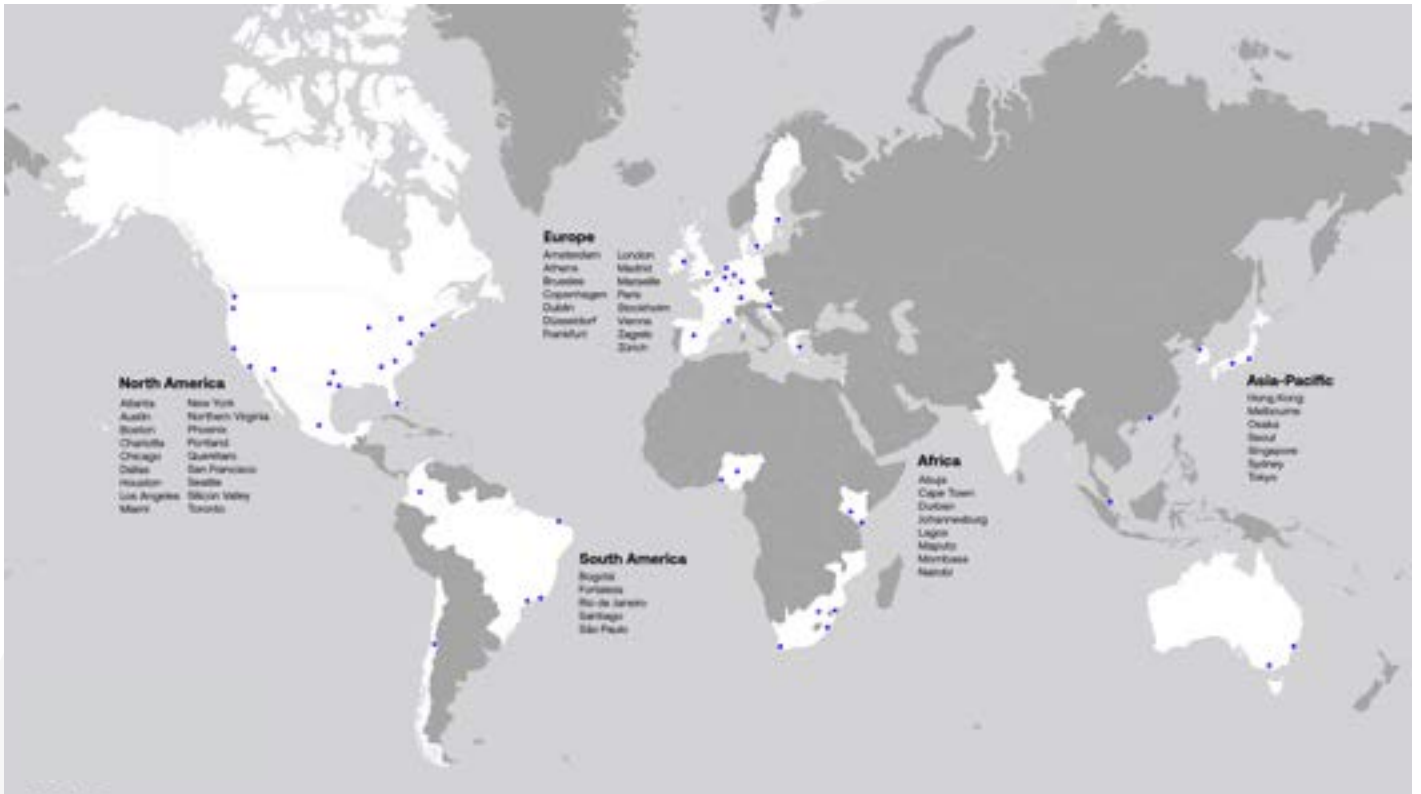
Whether you prefer a dedicated connection or to use Digital Realty's bespoke cloud access service, Cloud Connect, you can connect to the clouds of your choice.

## Digital Realty Cloud Connect

Cloud Connect is Digital Realty's bespoke cloud access service which enables private connections to multiple cloud providers. The service enables our customers to establish private, secure and SLA-based connections between the hyperscale clouds and the colocated IT environment, through Cloud Connect. This provides a reliable connection with increased performance and bandwidth and is more secure than Internet-based connectivity.

Build, manage and grow your hybrid cloud on a flexible, vendor independent, future-proof platform with Digital Realty Cloud Connect.





## About Digital Realty

Digital Realty brings companies and data together by delivering the full spectrum of data center, colocation and interconnection solutions. PlatformDIGITAL®, the company's global data center platform, provides customers with a secure data meeting place and a proven Pervasive Datacenter Architecture (PDx®) solution methodology for powering innovation and efficiently managing Data Gravity challenges. Digital Realty gives its customers access to the connected data communities that matter to them with a global data center footprint of 300+ facilities in 50+ metros across 28 countries on six continents.

To learn more about Digital Realty, please visit [digitalrealty.com](https://digitalrealty.com) or follow us on [LinkedIn](#) and [Twitter](#).

**For more information, email**  
[customer.services@digitalrealty.com](mailto:customer.services@digitalrealty.com)

Digital Realty Trust, Inc. owns or licenses all copyright rights in all content, including, without limitation, all text, images, videos, and graphics in this document, to the full extent provided under the copyright laws of the United States and other countries. This copyright prohibits any act of copying, reproducing, modifying, distributing, displaying, performing or transmitting any of the content in this document for any purpose.

### Disclaimer

The content herein and services by Digital Realty are provided to you on an "As Is" and "As Available" basis, except as set forth in a definitive agreement between you and Digital Realty. Except as expressly provided, to the full extent permissible by law, Digital Realty disclaims all representations and warranties of any kind, express or implied, including, without limitation, any implied warranties of merchantability and fitness for a particular purpose. To the full extent permissible by law, Digital Realty will not be liable for any damages of any kind, including, any loss of profits, loss of use, business interruption, or indirect, special, incidental, consequential, or punitive damages of any kind in connection with services, content, products or any other information provided or otherwise made available to you by Digital Realty.