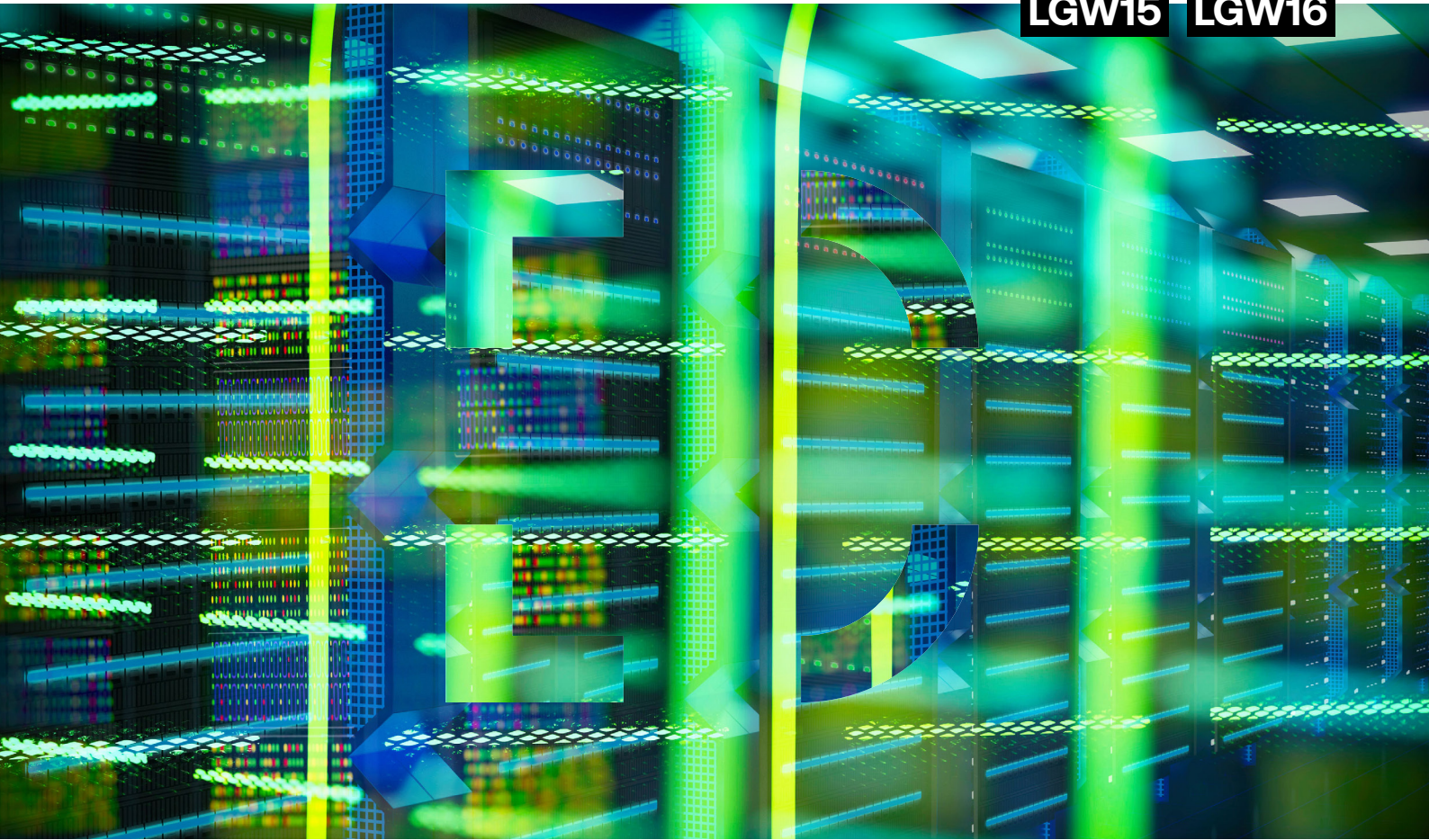


LGW15

LGW16



Crawley Data Centres

Situated in the largest business park within the regional Gatwick Diamond development area, the Crawley campus offers two of the closest scale data centres to London's Gatwick Airport. Just a short journey by road from the M23 motorway and 35 minutes from central London's Victoria and London Bridge stations, Crawley provides accessible, bespoke data centre solutions.

With its significant power availability, high energy efficiency and diverse fibre routes to metro hubs and European links, Crawley offers scale and connectivity to both regional and global companies.

- Unrivalled proximity to Gatwick Airport
- Bespoke customer solutions
- Excellent amenities
- Direct customer network connectivity or via POP rooms
- A 'BREEAM Excellent' sustainability assessment
- High density capacity
- Perimeter fencing
- Dedicated car parking at both sites

[Book a tour](#)**10**

minutes from
Gatwick Airport.

72

MVA of available power.

BREEAM

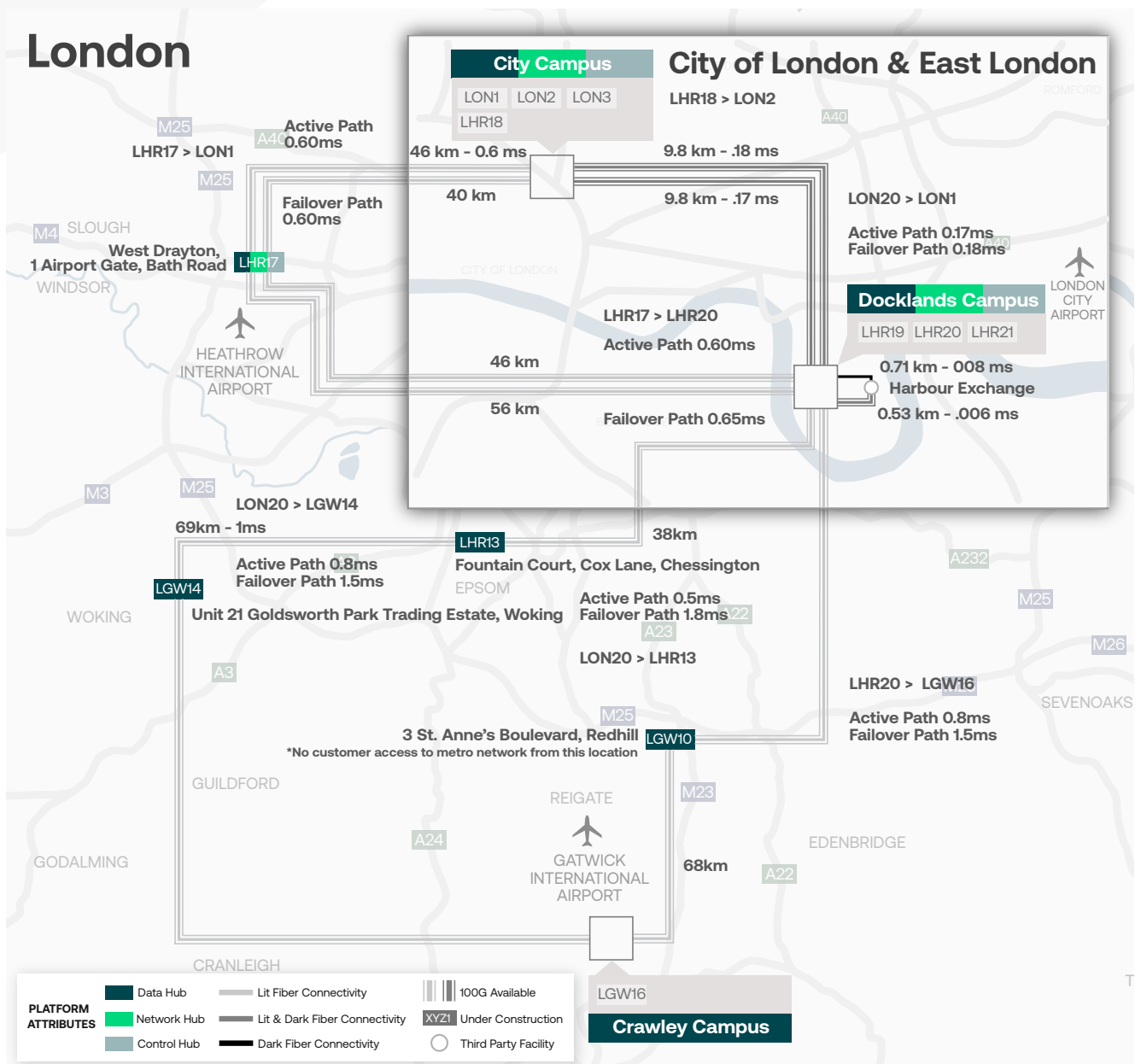
certified for building
sustainability.

London Metro Connectivity

Crawley is an interconnected part of the **London Metro** which connects eight of Interxion's colocation sites across the London Metropolitan area, enabling reliable connectivity direct to your partners, suppliers and other Interxion customers. Connect to The City data centres, as well as The Docklands, providing secure access to cloud on-ramps and geographically diverse options for back-up and disaster recovery.

Unlock your global IT strategy from London

Our global infrastructure solution, **PlatformDIGITAL®** enables businesses to interconnect global workflows from anywhere in the world, fulfilling their connectivity needs quickly and efficiently. With access to over 700 connectivity providers, key hyperscale public clouds, local cloud providers, network density and interconnection services customers are able to deploy their IT infrastructure in the buildings and locations of their choice. All benefit from 99.999% uptime, implementation and service consistency across the world and the highest level of physical and network security.



Crawley Technical Overview

Building

Size

- Unit 1: 11,283m²
4x 1,600m² data halls
- Unit 2: 10,140m²
2x 1,400m² and 2x 1,300m² data halls

Floor

- Unit 1: Solid
- Unit 2: Raised - all overhead services

Power

- Total power: 72MVA
- 2 utility suppliers
- UPS redundancy: N+1
- Own sub-station, 132 KV
- N+1 diesel generators
 - Unit 1: 8 + 2PBB generators
 - Unit 2: 7
- 99.999% uptime SLA

Cooling

- Cooling configuration: Indirect Adiabatic Air Coolers
- Cooling redundancy:
 - Unit 1: N+2 per data hall
 - Unit 2: N+1 per data hall

Fire Detection

- Very Early Smoke Detection Alert (VESDA)
- Low pressure water mist fire suppression system

Security

- 24/7 CCTV inside and out, 90 days recording
- Anti-tailgate entry
- Card readers
- Biometric readers in data halls and POP rooms
- Perimeter fencing

Connectivity

- Diverse cable routing into facility
- Direct-to-space network connectivity or via POP room

Products and Services

Products

- Bespoke customer solutions

Services

- 24/7 customer maintenance support
- Customer portal

Amenities

- Storage room and build fit-out rooms
- Unloading and deboxing facilities
- Goods lift: Unit 1, Unit 2 on one level
- Separate passenger lifts
- Break out rooms with full kitchen facilities
- Wi-Fi
- Conference room
- Extensive customer office space
- Onsite parking at both facilities

Certification

- SOC2
- SOC3
- ISO 27001
- ISO 14001
- ISO 9001
- ISO 50001
- PCI DSS

Digital Realty

Crawley

Unit 1, Power Avenue, Manor Royal, Crawley RH10 9BE

Unit 2, Connect Way, Manor Royal, Crawley RH10 9BD

Email: customer.services@digitalrealty.com

About Digital Realty Digital Realty brings companies and data together by delivering the full spectrum of data center, colocation and interconnection solutions. PlatformDIGITAL®, the company's global data center platform, provides customers with a secure data meeting place and a proven Pervasive Datacenter Architecture (PDx®) solution methodology for powering innovation and efficiently managing Data Gravity challenges. Digital Realty gives its customers access to the connected data communities that matter to them with a global data center footprint of 300+ facilities in 50+ metros across 28 countries on six continents.

To learn more about Digital Realty, please visit digitalrealty.com or follow us on [LinkedIn](#) and [Twitter](#).