

# 2001 Sixth Avenue (Westin Building)

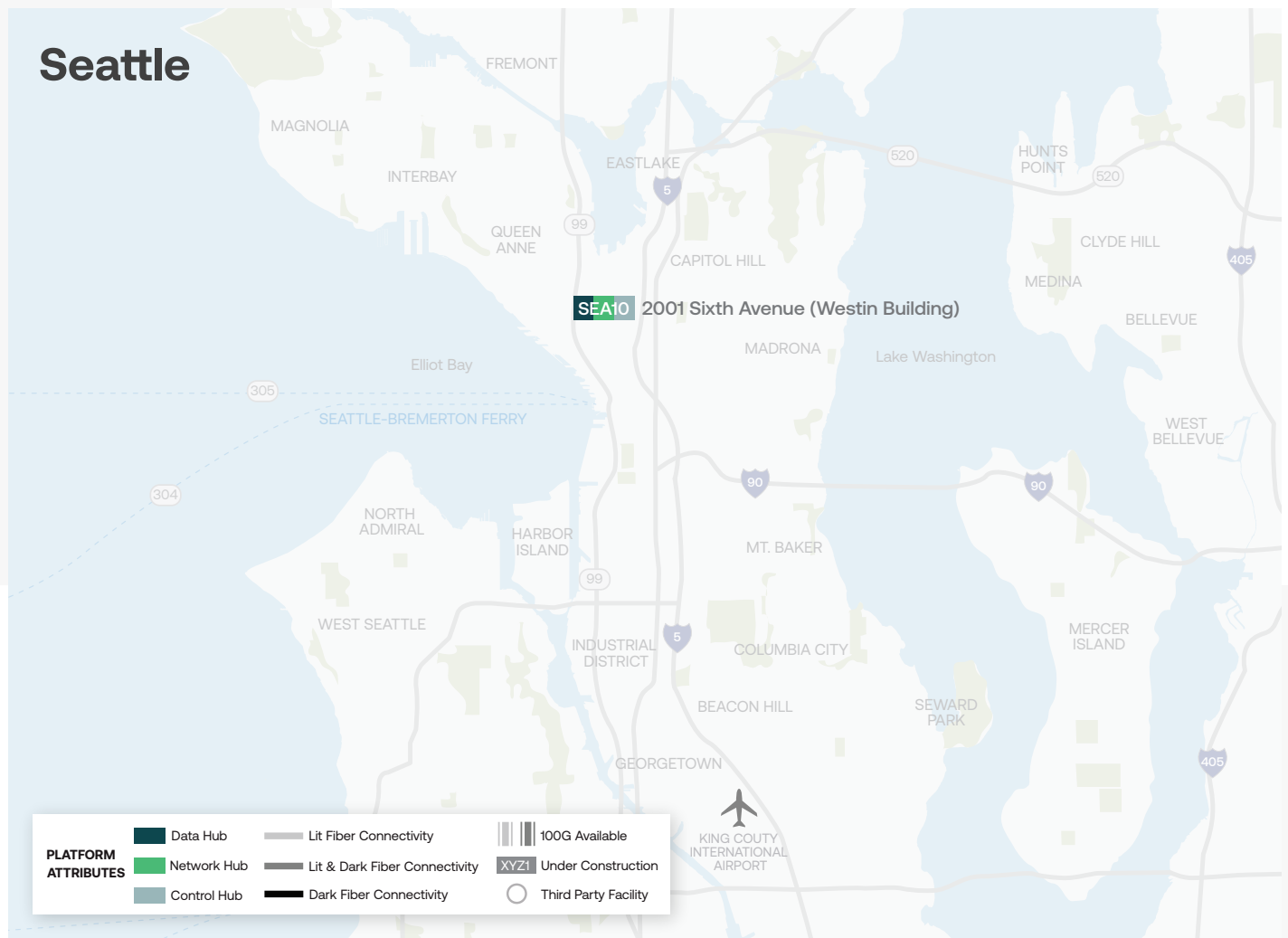
Seattle, WA



# Why the Westin Building (SEA10)?

Digital Realty's **SEA10**, the Westin Building, is the telecommunications hub and internet gateway for the Pacific Northwest. This 34-story colocation data center provides access to our premier carrier-neutral Meet-Me Rooms

(MMRs), colocation services, and downtown office space. The building has been extensively upgraded with a robust electrical and mechanical infrastructure.



## Location

Digital Realty's Seattle data center is located in the heart of downtown and is located near major corporate headquarters and transportation hubs.

## Metro Ecosystem

- 160+ Total customers
- 10+ Cloud providers
- 5+ Content providers
- 20+ Information Technology providers
- 75+ Network providers

## Space

- Cabinets
- Cages

## Connectivity

### Internet

- IP Bandwidth
- Seattle IX
- NetIX
- MegalX

### Cloud

- ServiceFabric™
- AWS Direct Connect
- IBM Direct Link



# Technical Overview

2001 Sixth Avenue (Westin Building)

## Building

- 34 stories, 400,000 sq. ft.

---

## Power

- UPS Redundancy: N+2
- DC Power: Available

---

## Cooling

- Cooling Redundancy: N+1

---

## Roof

- Roof Rights Available - ICB

---

## Fiber and Building Entry

- Multiple Diverse Entrances

---

## Security

- 24x7 Onsite Security Personnel
- CCTV with 90 day backup
- Biometric / Photo Badge Access
- Man-Trap

---

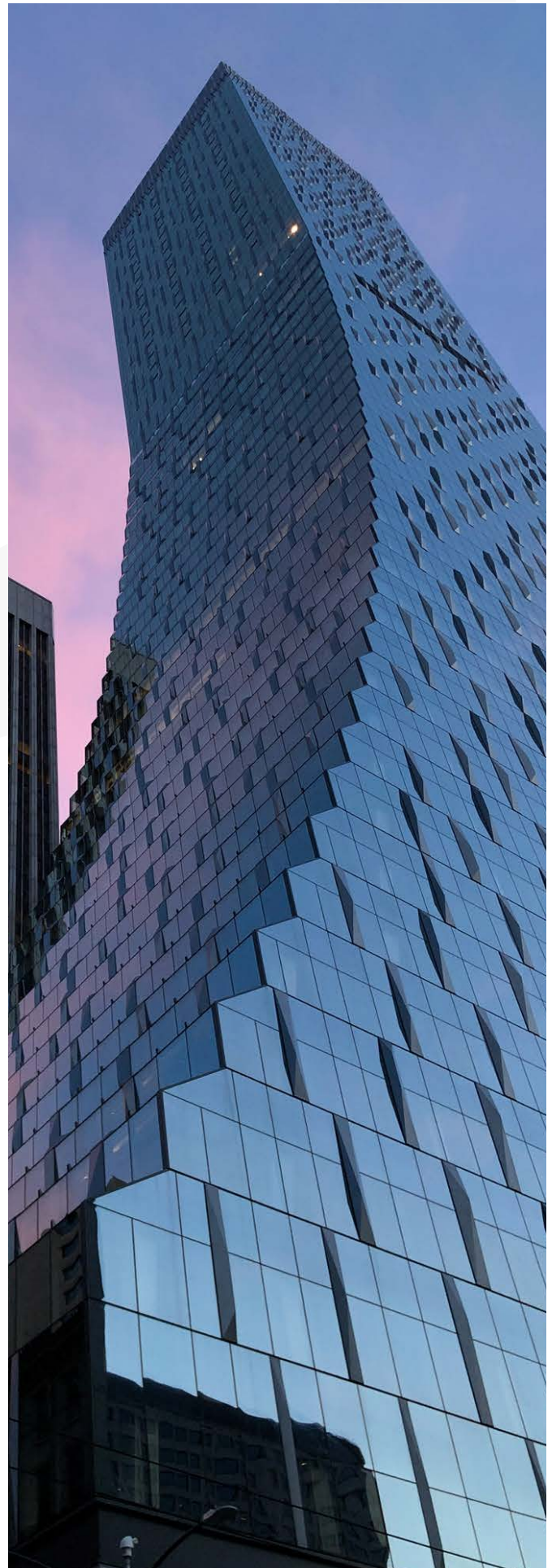
## Remote Hands

- 24x7x365

---

## Certification

- SOC1
- PCI-DSS



## About Digital Realty

Digital Realty brings companies and data together by delivering the full spectrum of data center, colocation and interconnection solutions. PlatformDIGITAL®, the company's global data center platform, provides customers with a secure data meeting place and a proven Pervasive Datacenter Architecture (PDx®) solution methodology for powering innovation and efficiently managing Data Gravity challenges. Digital Realty gives its customers access to the connected data communities that matter to them with a global data center footprint of 300+ facilities in 50+ metros across 25+ countries on six continents.

To learn more about Digital Realty, please visit **[digitalrealty.com](https://digitalrealty.com)** or follow us on **LinkedIn** and **Twitter**.

### For leasing information

For a tour of our facility, complimentary IT infrastructure consultation or sales information, call or email us at:

#### Digital Realty

2001 Sixth Avenue (Westin Building)

Seattle, WA

Tel: +1 877 378 3282

E-mail: **[sales@digitalrealty.com](mailto:sales@digitalrealty.com)**

---

Digital Realty Trust, Inc. owns or licenses all copyright rights in all content, including, without limitation, all text, images, videos, and graphics in this document, to the full extent provided under the copyright laws of the United States and other countries. This copyright prohibits any act of copying, reproducing, modifying, distributing, displaying, performing or transmitting any of the content in this document for any purpose.

#### Disclaimer

The content herein and services by Digital Realty are provided to you on an "As Is" and "As Available" basis, except as set forth in a definitive agreement between you and Digital Realty. Except as expressly provided, to the full extent permissible by law, Digital Realty disclaims all representations and warranties of any kind, express or implied, including, without limitation, any implied warranties of merchantability and fitness for a particular purpose. To the full extent permissible by law, Digital Realty will not be liable for any damages of any kind, including, any loss of profits, loss of use, business interruption, or indirect, special, incidental, consequential, or punitive damages of any kind in connection with services, content, products or any other information provided or otherwise made available to you by Digital Realty.