

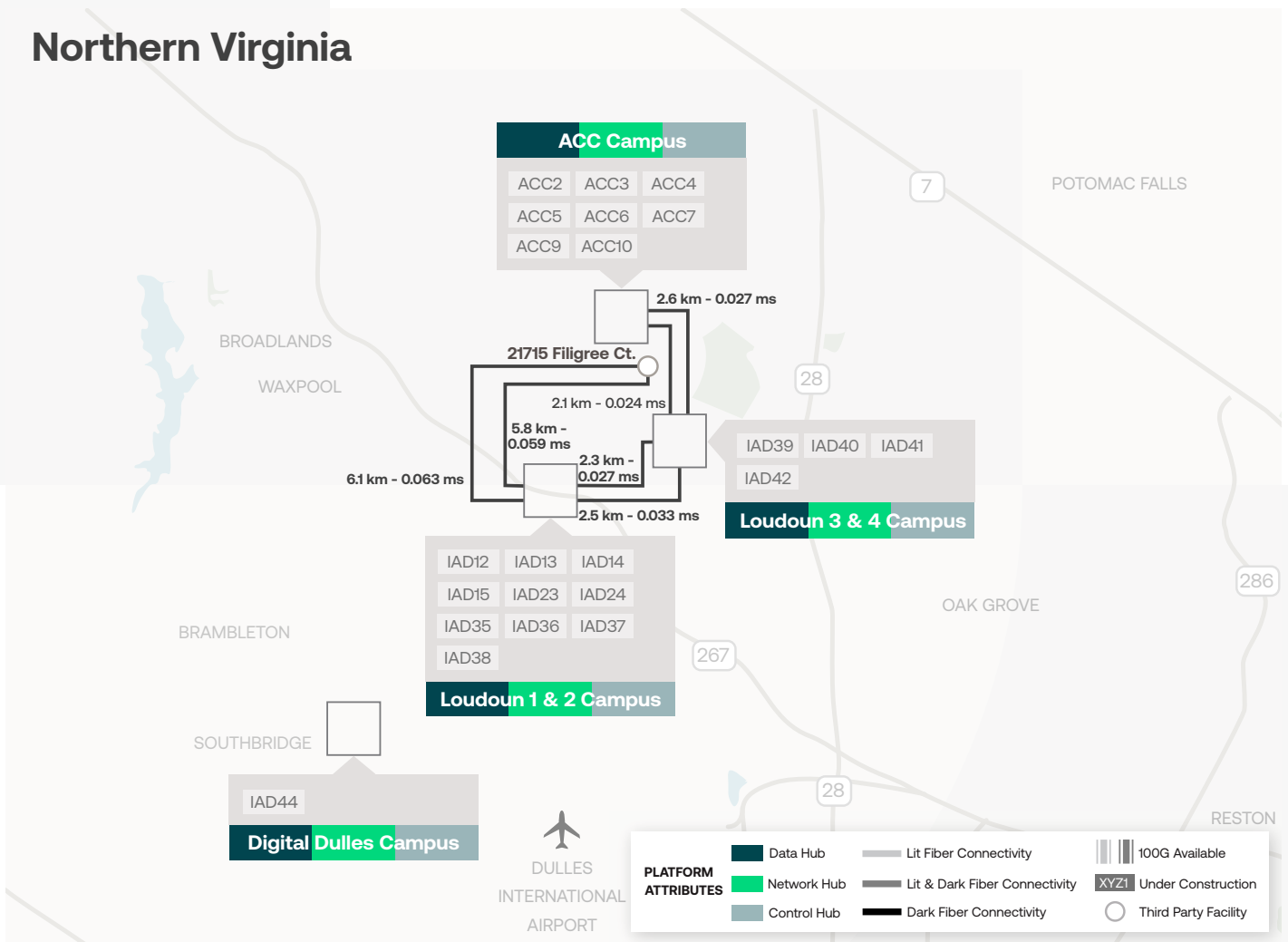
44480 Hastings Drive  
Ashburn, Virginia



# Why 44480 Hastings Drive (ACC4)?

Discover one of the most efficient and cost-effective data centers in the world, built from the ground up to deliver maximum power and reliability. **ACC4** 44480 Hastings Drive is sited on 17 acres of our Ashburn Corporate Center campus in Loudoun County, a Virginia area known as Data Center Alley.

Nearby mass transit makes Ashburn easily accessible to the world and your team. Proximity to the nation's capital keeps your business connected to industry associations, policymakers, potential corporate allies and a deep pool of technical talent.



## Metro Ecosystem

- 200+ Total customers
- 45+ Cloud providers
- 15+ Content providers
- 25+ Information Technology providers
- 40+ Network providers

## Space

- Cabinets
- Cages
- Private Suites

## Connectivity

- Inter-site**
  - Metro Connect
  - Campus Connect
- Internet**
  - DRIX
  - IP Bandwidth

## Cloud

- ServiceFabric™
- AWS Direct Connect
- IBM Direct Link



# Technical Overview

44480 Hastings Drive

## Building

- 2 Level; 1,057,000 sq.ft.
  - Flood Zone: Outside 500 year flood plain
- 

## Power

- UPS Redundancy: N+1
  - DC Power: Yes
- 

## Cooling

- Cooling Redundancy: N+2
  - High density available
- 

## Roof

- EPDM insulated metal deck
  - Roof Rights Available - ICB
- 

## Fiber and Building Entry

- Multiple Diverse Entrances
- 

## Security

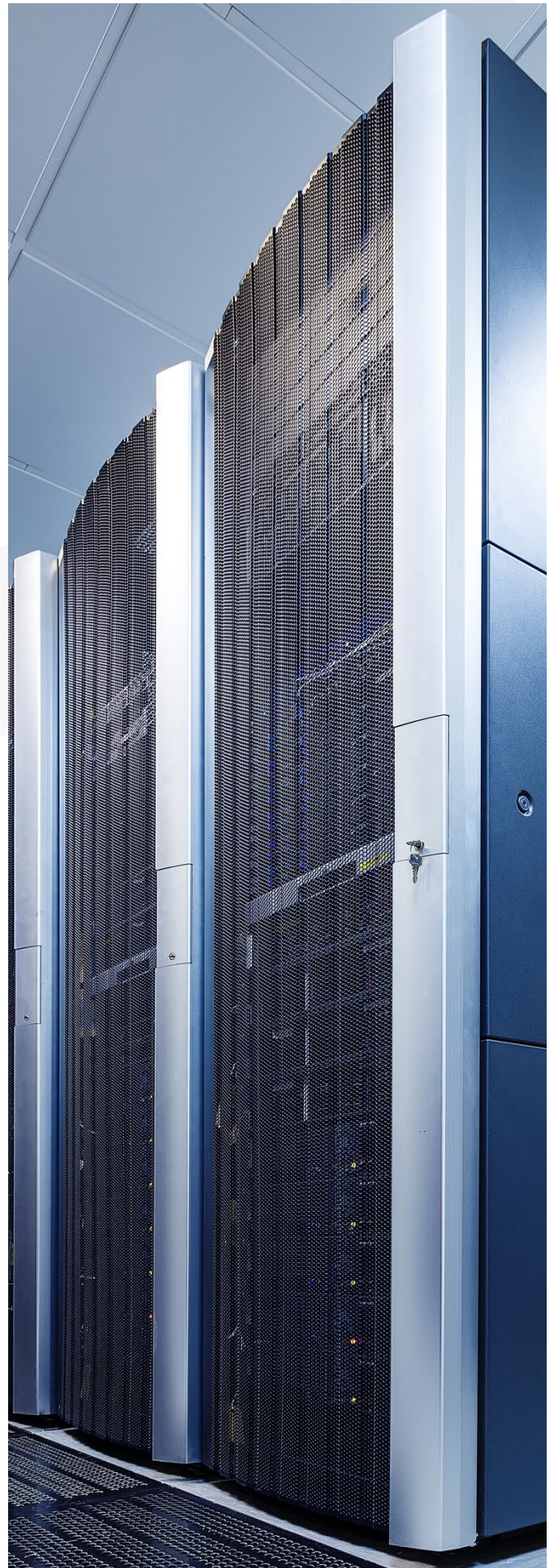
- 24x7x365 Security Personnel
  - Biometric / Card Access
  - CCTV with 90 day backup
- 

## Remote Hands

- 24x7x365
- 

## Certification

- SOC2
- SOC3
- PCI DSS
- ISO 9001
- ISO 14001
- ISO 27001



## About Digital Realty

Digital Realty brings companies and data together by delivering the full spectrum of data center, colocation and interconnection solutions. PlatformDIGITAL®, the company's global data center platform, provides customers with a secure data meeting place and a proven Pervasive Datacenter Architecture (PDx®) solution methodology for powering innovation and efficiently managing Data Gravity challenges. Digital Realty gives its customers access to the connected data communities that matter to them with a global data center footprint of 300+ facilities in 50+ metros across 25+ countries on six continents.

To learn more about Digital Realty, please visit [digitalrealty.com](https://digitalrealty.com) or follow us on [LinkedIn](#) and [Twitter](#).

### For leasing information

For a tour of our facility, complimentary IT infrastructure consultation or sales information, call or email us at:

**Digital Realty**  
44480 Hastings Drive  
Ashburn, Virginia  
Tel: +1 877 378 3282  
E-mail: [sales@digitalrealty.com](mailto:sales@digitalrealty.com)

---

Digital Realty Trust, Inc. owns or licenses all copyright rights in all content, including, without limitation, all text, images, videos, and graphics in this document, to the full extent provided under the copyright laws of the United States and other countries. This copyright prohibits any act of copying, reproducing, modifying, distributing, displaying, performing or transmitting any of the content in this document for any purpose.

### Disclaimer

The content herein and services by Digital Realty are provided to you on an "As Is" and "As Available" basis, except as set forth in a definitive agreement between you and Digital Realty. Except as expressly provided, to the full extent permissible by law, Digital Realty disclaims all representations and warranties of any kind, express or implied, including, without limitation, any implied warranties of merchantability and fitness for a particular purpose. To the full extent permissible by law, Digital Realty will not be liable for any damages of any kind, including, any loss of profits, loss of use, business interruption, or indirect, special, incidental, consequential, or punitive damages of any kind in connection with services, content, products or any other information provided or otherwise made available to you by Digital Realty.