

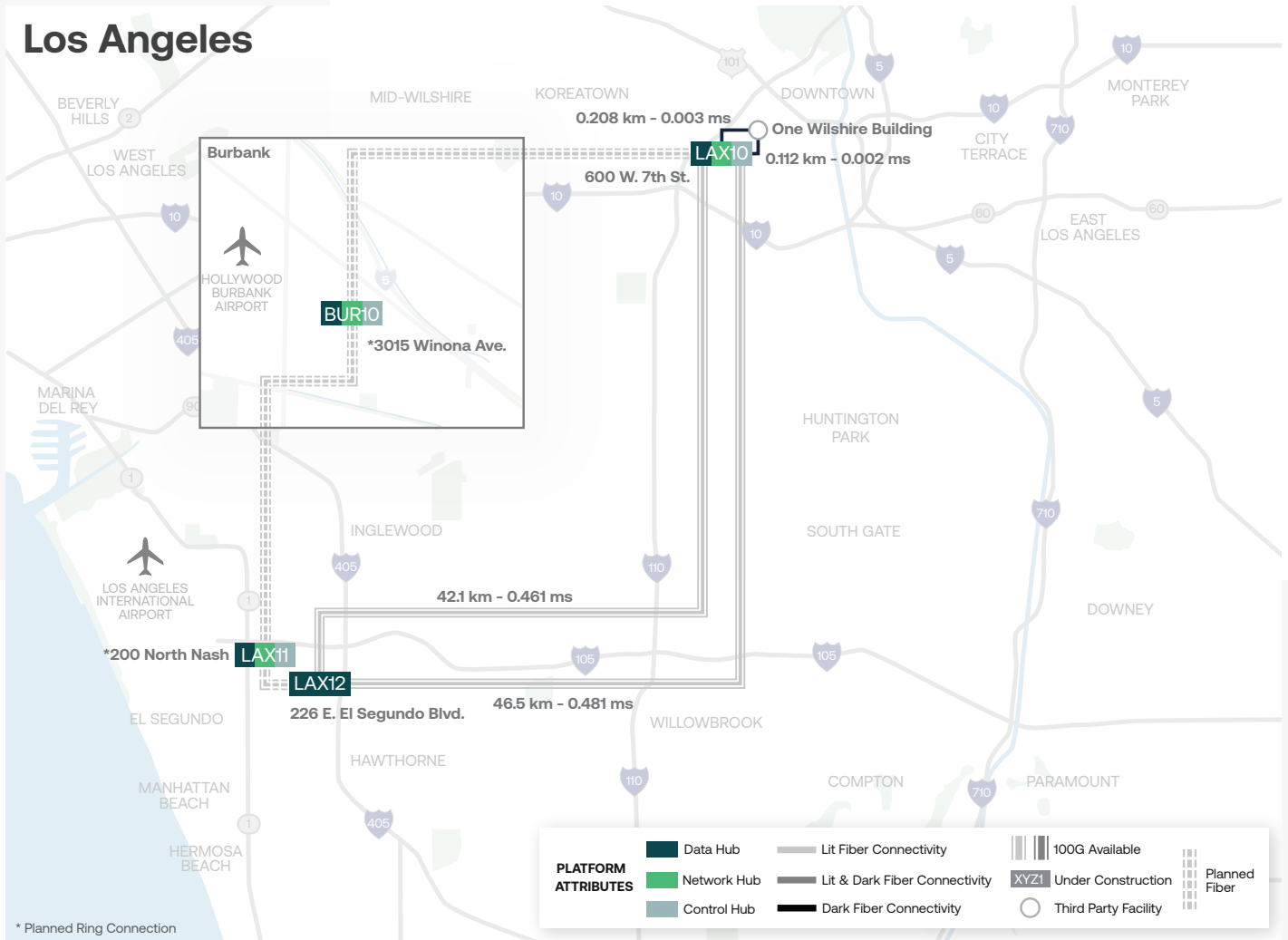
200 North Nash Street
El Segundo, California



Why 200 North Nash Street (LAX11)?

Located in one of the most business-friendly cities in Los Angeles County, Digital Realty's El Segundo facility, **LAX11**, has the space, connectivity, and on-site services available to allow companies to easily implement agile IT deployments within the greater Los Angeles

area and around the world. With a robust ecosystem of cloud and connectivity options, Digital Realty's LAX11 can support your current requirements as well as future growth.



Location

200 North Nash Street (LAX11) is located close to LAX and offers all the benefits of a highly connected location, with access to numerous network providers, Internet exchange points and service delivery networks. This facility also boasts the highest levels of disaster protection and recovery in the United States, managed by a world-class team of professionals.

Metro Ecosystem

- 120+ Total customers
- 15+ Cloud providers
- 10+ Content providers
- 20+ Information Technology providers
- 35+ Network providers

Space

- Cabinets
- Cages
- Private Suites

Connectivity

- Metro**
- Metro Connect
- Internet**
- IP Bandwidth
 - MegalX

- Cloud**
- ServiceFabric™
 - Google Cloud
 - Oracle Cloud

Technical Overview

200 North Nash Street (LAX11)

Building

- 2 levels., 60,000 sq ft of customer space
- Flood Zone: Outside 500 year flood plain

Power

- UPS Redundancy: N+1
- Generator Redunancy: N+1
- High density available

Cooling

- Cooling Redundancy: N+1
- Temperature and humidity maintained to ASHRAE TC9.9 standards

Fire Detection and Suppression

- VESDA provides early warning detection
- Pre-action dry pipe sprinkler system

Max Floor Loading

- 150 (lbs/sq.ft.)

Fiber and Building Entry

- Multiple Diverse Entrances

Security

- 24x7x365 Onsite Security Personnel
- CCTV with 90 day backup
- Biometric / Photo Badge Access

Remote Hands

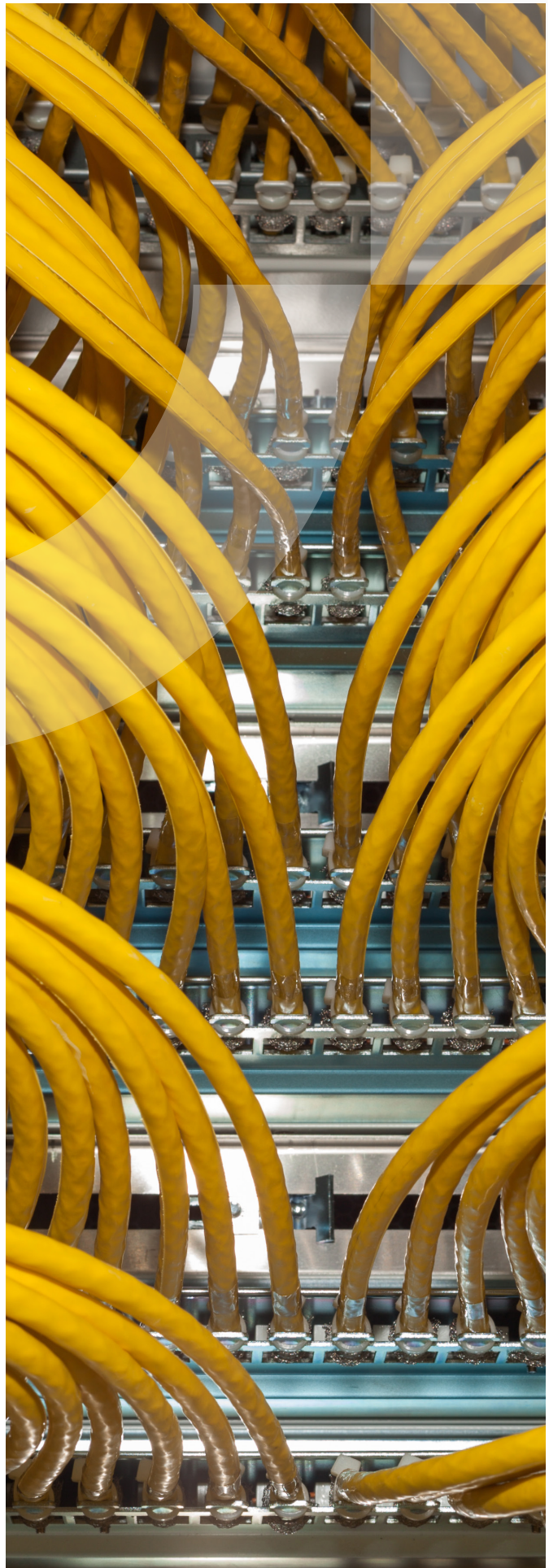
- Available

Certification

- SOC1
- SOC2
- PCI-DSS
- ISO 27001

Sustainability

- Energy Star certified



About Digital Realty

Digital Realty brings companies and data together by delivering the full spectrum of data center, colocation and interconnection solutions. PlatformDIGITAL®, the company's global data center platform, provides customers with a secure data meeting place and a proven Pervasive Datacenter Architecture (PDx®) solution methodology for powering innovation and efficiently managing Data Gravity challenges. Digital Realty gives its customers access to the connected data communities that matter to them with a global data center footprint of 300+ facilities in 50+ metros across 25+ countries on six continents.

To learn more about Digital Realty, please visit digitalrealty.com or follow us on [LinkedIn](#) and [X](#).

For leasing information

For a tour of our facility, complimentary IT infrastructure consultation or sales information, call or email us at:

Digital Realty

200 North Nash Street
El Segundo, California

Tel: +1 877 378 3282

E-mail: sales@digitalrealty.com

Digital Realty Trust, Inc. owns or licenses all copyright rights in all content, including, without limitation, all text, images, videos, and graphics in this document, to the full extent provided under the copyright laws of the United States and other countries. This copyright prohibits any act of copying, reproducing, modifying, distributing, displaying, performing or transmitting any of the content in this document for any purpose.

Disclaimer

The content herein and services by Digital Realty are provided to you on an "As Is" and "As Available" basis, except as set forth in a definitive agreement between you and Digital Realty. Except as expressly provided, to the full extent permissible by law, Digital Realty disclaims all representations and warranties of any kind, express or implied, including, without limitation, any implied warranties of merchantability and fitness for a particular purpose. To the full extent permissible by law, Digital Realty will not be liable for any damages of any kind, including, any loss of profits, loss of use, business interruption, or indirect, special, incidental, consequential, or punitive damages of any kind in connection with services, content, products or any other information provided or otherwise made available to you by Digital Realty.