

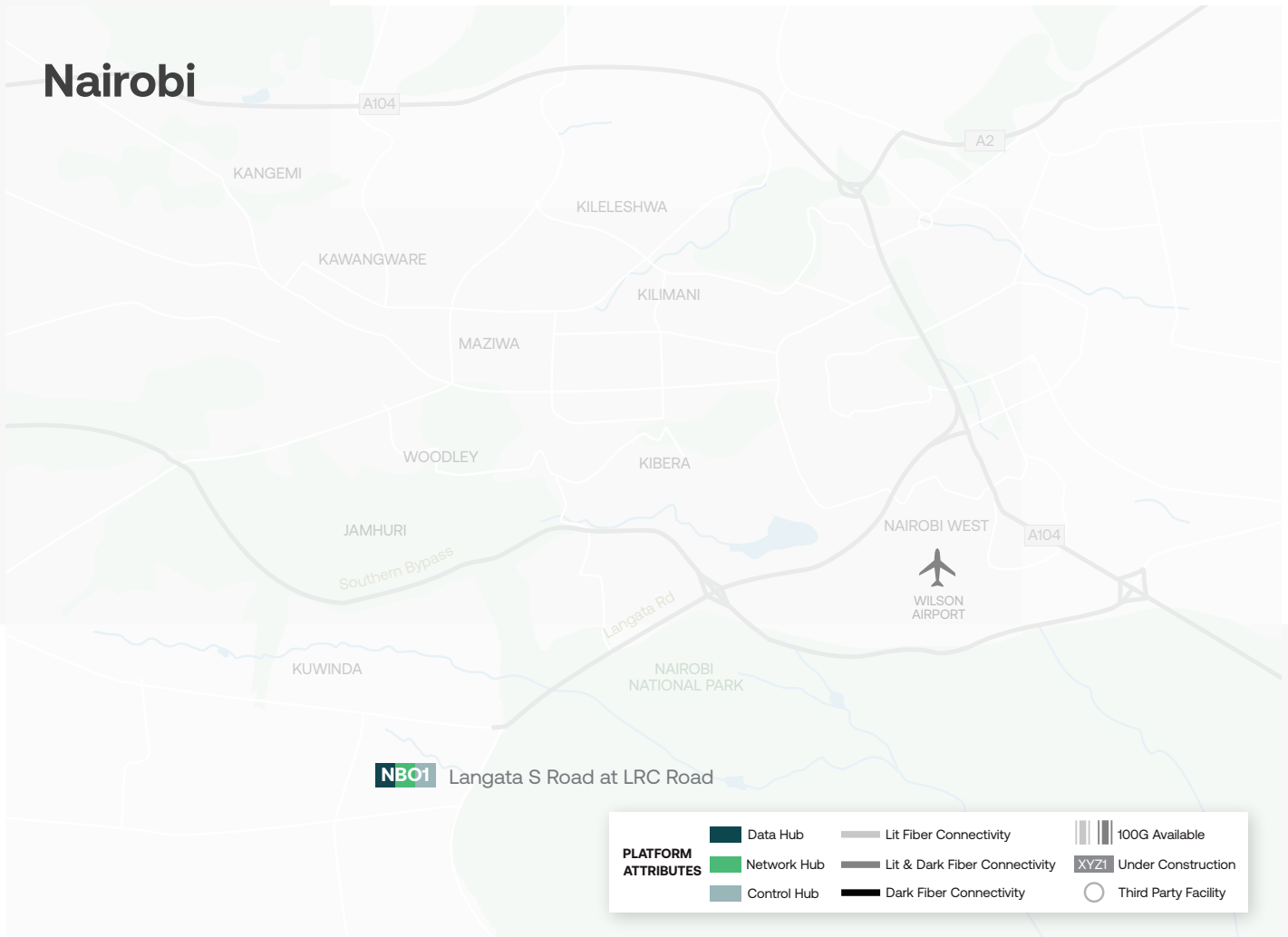
Nairobi  
Kenya



# Why Nairobi Karen Campus (NBO1, NBO2)?

A master-planned campus with over 34,000 square meters of space and more than 14 MW available IT power, clients have room to grow. With its world-class data center infrastructure and network dense ecosystems, this location forms a vital part of the African Internet's backbone, allowing customer access to numerous service providers and clouds.

Whether you are serving up Internet content, financial data, or cloud-based services, the facilities in the Nairobi campus provide an efficient, secure and resilient location for clients to address their increasing power and space needs.



## Location

Located in the Karen suburb of Nairobi, the **NBO1 and NBO2** facilities are located on LRC Road near the IBM Research facility and local universities, and 23 km from the international airport.

## Metro Ecosystem

- 70+ Total customers
- 10+ Cloud providers
- 5+ InformationTechnology providers
- 40+ Network providers

## Space

- Cabinets
- Cages
- Private Suites

## Connectivity

- Internet**
- Asteroid
  - KIXP

# Technical Overview

Nairobi Karen Campus (NBO1, NBO2)

## Building

- Whitespace: NBO 1 = 650 m<sup>2</sup>, NBO2 = 3,600 m<sup>2</sup>

## Power

- UPS Redundancy: 2N
- Designed for resiliency and concurrent maintenance
- Uptime Institute Tier III certification for NBO1

## Cooling

- Cooling Redundancy: N+2

## Remote Hands

- 24x7 Availability

## Security

- 24x7 Onsite Security Personnel
- CCTV with 30+ day backup
- Biometric / Card Access

## Connectivity

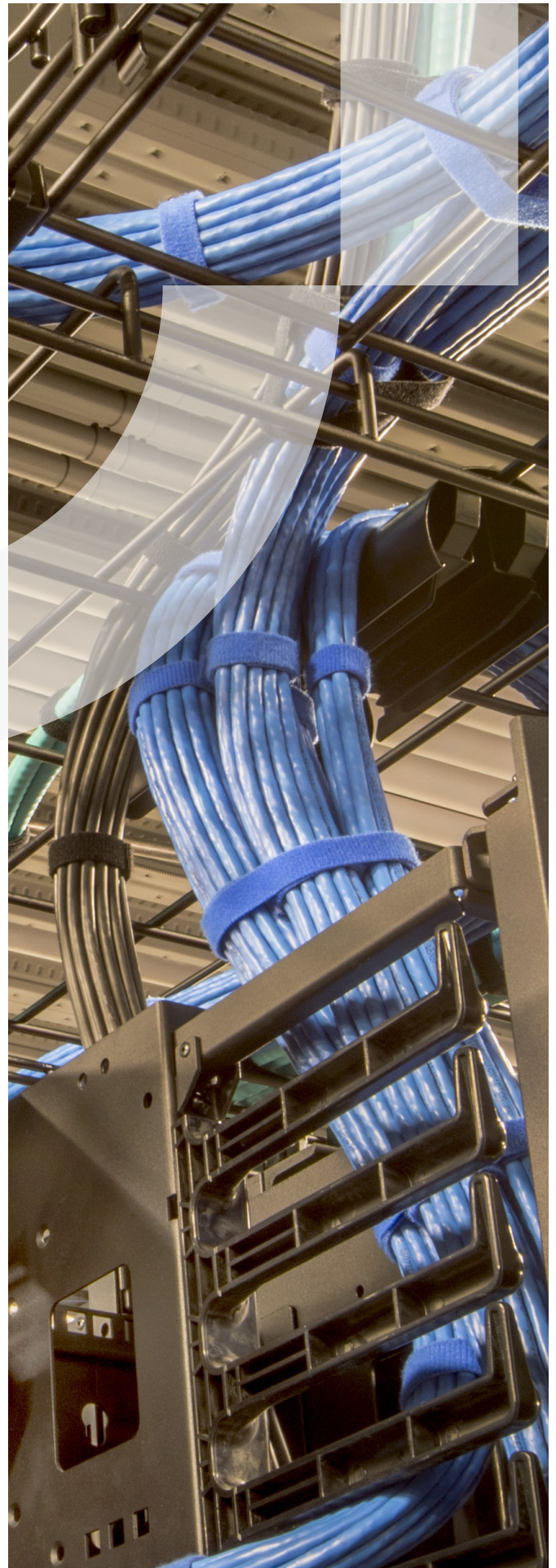
- Multiple diverse POE

## Compliance

- PCI-DSS
- ISO 27001

## Sustainability

- 200+ kW solar panel installation



## About Digital Realty

Digital Realty brings companies and data together by delivering the full spectrum of data center, colocation and interconnection solutions. PlatformDIGITAL®, the company's global data center platform, provides customers with a secure data meeting place and a proven Pervasive Datacenter Architecture (PDx®) solution methodology for powering innovation and efficiently managing Data Gravity challenges. Digital Realty gives its customers access to the connected data communities that matter to them with a global data center footprint of 300+ facilities in 50+ metros across 25+ countries on six continents.

To learn more about Digital Realty, please visit [digitalrealty.com](https://digitalrealty.com) or follow us on [LinkedIn](#) and [X](#).

### For leasing information

For a tour of our facility, complimentary IT infrastructure consultation or sales information, call or email us at:

#### Digital Realty Nairobi

Langata S Rd & LRC Rd

Nairobi

Kenya

Tel: +1 877 378 3282

E-mail: [sales@digitalrealty.com](mailto:sales@digitalrealty.com)

---

Digital Realty Trust, Inc. owns or licenses all copyright rights in all content, including, without limitation, all text, images, videos, and graphics in this document, to the full extent provided under the copyright laws of the United States and other countries. This copyright prohibits any act of copying, reproducing, modifying, distributing, displaying, performing or transmitting any of the content in this document for any purpose.

#### Disclaimer

The content herein and services by Digital Realty are provided to you on an "As Is" and "As Available" basis, except as set forth in a definitive agreement between you and Digital Realty. Except as expressly provided, to the full extent permissible by law, Digital Realty disclaims all representations and warranties of any kind, express or implied, including, without limitation, any implied warranties of merchantability and fitness for a particular purpose. To the full extent permissible by law, Digital Realty will not be liable for any damages of any kind, including, any loss of profits, loss of use, business interruption, or indirect, special, incidental, consequential, or punitive damages of any kind in connection with services, content, products or any other information provided or otherwise made available to you by Digital Realty.