

SYD10  
1-11 Templar Road  
Sydney, Australia





# SYD10 at a Glance

- Uptime Institute Tier III Design and Construction Certified
- Carrier-neutral connectivity
- 7,990 m² building, adjacent to SYD11 facility
- Single (1) storey modular box-in-box construction methodology with outer concrete shell
- Powered by renewable energy sources, with LEED Gold and NABERS certification
- Demonstrated five nines (99.999%) uptime
- Meeting room and café/lounge available for customer use
- Dual dedicated diversely routed incoming HV power
- Dual diversely routed pathways to the two(2) separate Point of Presence Rooms
- Excellent connectivity to the site with multiple carriers with diverse routing
- Comprehensive facility security meets ASIO, PCI and relevant ISO security classifications

## 99.999% Uptime

For the fifteenth consecutive year, Digital Realty has achieved five-nines – or 99.999 percent – availability for our customers. Digital Realty’s longstanding record of operational excellence continues, equating to more than 3.7 billion operational minutes throughout 2021.

Uptime metrics are based on a comprehensive evaluation of data center suites owned and operated by Digital Realty worldwide using standard industry methodology. Total operational minutes were prorated per year for each data center suite, beginning on the commissioning date, from the beginning of 2007 through 2021.

# Technical Overview

1-11 Templar Road

## Cooling

- Ideal site for free cooling based on climate analysis
- Roof mounted free-air cooling Air Handling Units and perimeter based high efficiency free cooling pumped refrigerant systems per data hall
- Cooling Redundancy: N+2
- Designed in accordance with ASHRAE TC 9.9 2011 conditions with underfloor air supply

## Power

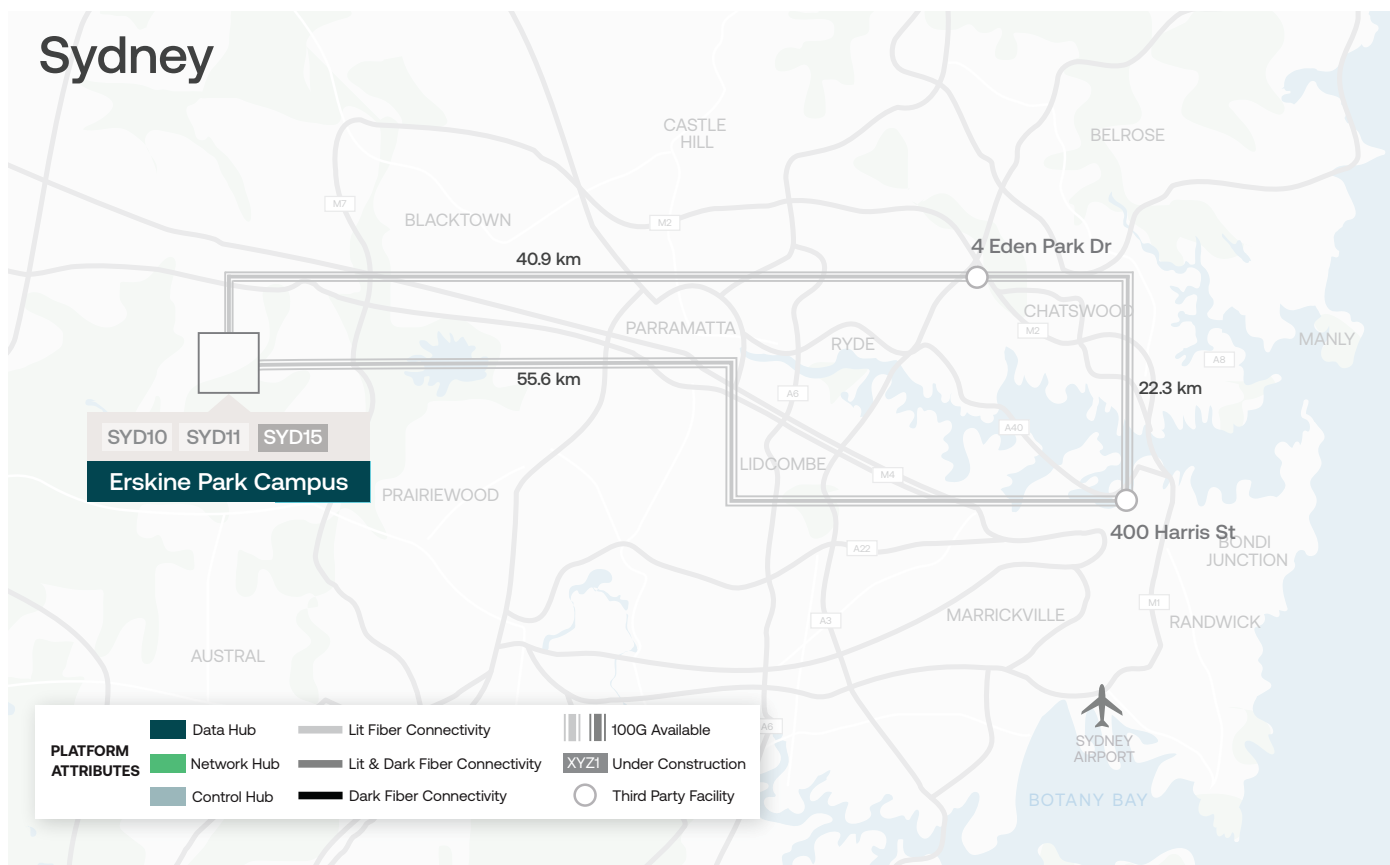
- Utility power from the nearby Mamre substation
- 2N electrical distribution paths throughout the site
- N+1 generators dedicated per data hall

## Connectivity

- Carrier-neutral access to Tier 1 providers
- Diverse and redundant fibre routes to the building
- ServiceFabric™ available for multi-cloud access
- Diverse and redundant POP (Point of Presence) rooms

## Security

- Premises monitored by security camera 24 x 365 with digital recording and archiving
- Dual authentication access to the data centre with Biometric Scan and Card Key access control
- Onsite security personnel 24 x 365
- Security systems complying with the requirements of ISO9001, ISO14001 and ISO27001
- SOC1, SOC2 and PCI-DSS compliant facility
- Capability to meet SCEC and ASIO T4 security requirements - Intruder Resistant and Secure Area criteria



## About Digital Realty

Digital Realty brings companies and data together by delivering the full spectrum of data center, colocation and interconnection solutions. PlatformDIGITAL®, the company's global data center platform, provides customers with a secure data meeting place and a proven Pervasive Datacenter Architecture (PDx®) solution methodology for powering innovation and efficiently managing Data Gravity challenges. Digital Realty gives its customers access to the connected data communities that matter to them with a global data center footprint of 300+ facilities in 50+ metros across 25+ countries on six continents.

To learn more about Digital Realty, please visit **[digitalrealty.com](https://digitalrealty.com)** or follow us on **LinkedIn** and **X**.

### For leasing information

For a tour of our facility, complimentary IT infrastructure consultation or sales information, email us at:

**Contact.**[APAC@digitalrealty.com](mailto:APAC@digitalrealty.com)

### Digital Realty

1-11 Templar Road, Erskine Park,  
Sydney, NSW 2759, Australia

---

Digital Realty Trust, Inc. owns or licenses all copyright rights in all content, including, without limitation, all text, images, videos, and graphics in this document, to the full extent provided under the copyright laws of the United States and other countries. This copyright prohibits any act of copying, reproducing, modifying, distributing, displaying, performing or transmitting any of the content in this document for any purpose.

### Disclaimer

The content herein and services by Digital Realty are provided to you on an "As Is" and "As Available" basis, except as set forth in a definitive agreement between you and Digital Realty. Except as expressly provided, to the full extent permissible by law, Digital Realty disclaims all representations and warranties of any kind, express or implied, including, without limitation, any implied warranties of merchantability and fitness for a particular purpose. To the full extent permissible by law, Digital Realty will not be liable for any damages of any kind, including, any loss of profits, loss of use, business interruption, or indirect, special, incidental, consequential, or punitive damages of any kind in connection with services, content, products or any other information provided or otherwise made available to you by Digital Realty.