

HIGH-PERFORMANCE METRO CHICAGO

Data Gravity Intensity Growth¹

122% CAGR THROUGH 2024

The Upper Midwest's Financial Heart

CHICAGO IS THE MAJOR
FINANCIAL AND NETWORK HUB
for the Upper Midwest Region.

CHICAGO WAS NAMED
#2 DATA CENTER MARKET
in the world.²

CHICAGO IS HOME TO NUMEROUS FORTUNE 500 COMPANIES,
with almost 40 headquartered in the metro area.³

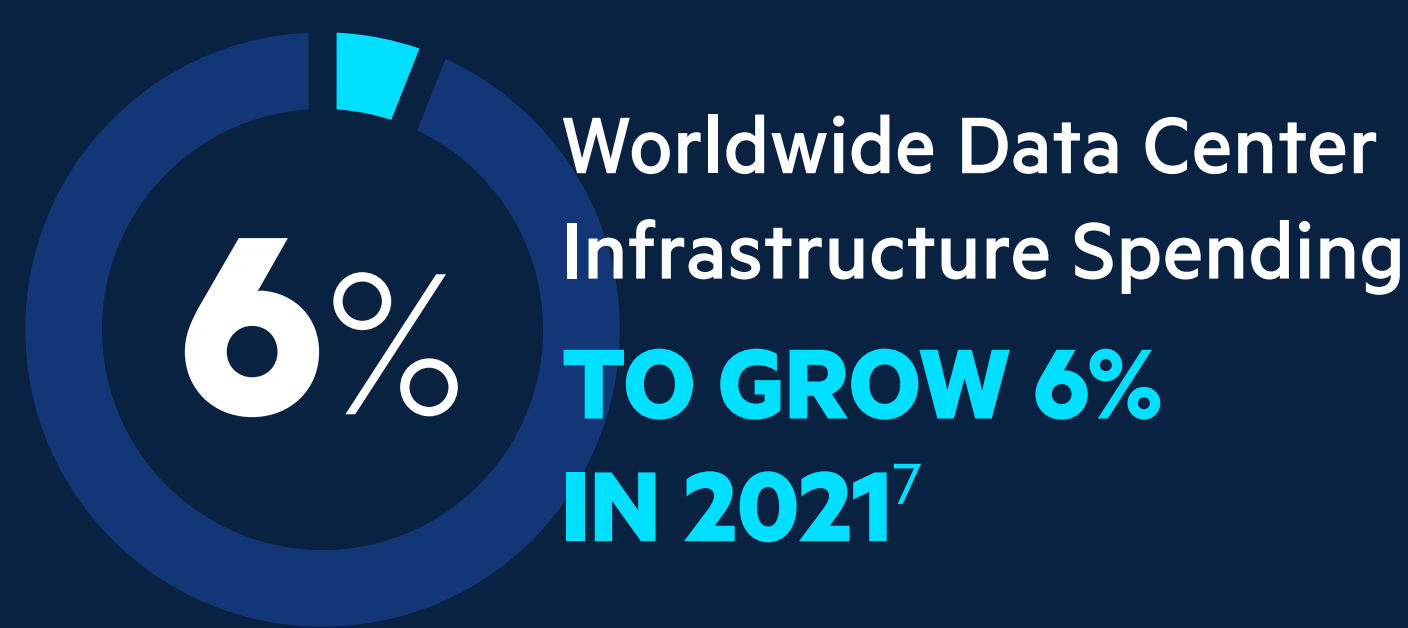
Chicago boasts access to a reliable power grid, strong fiber connectivity, local government incentives, easily available water for cooling, limited natural disasters and a helpful local permitting process.⁴

Powered Up

According to recent research from datacenterHawk, the greater Chicago market is home to more than
3.39 MILLION SF
of commissioned data center space, representing **325 MEGAWATTS (MW)** of commissioned power.⁵

Chicago reached
59MW
POWER
ABSORPTION
by the end of 2020.⁶

Global Trends Drive Demand



\$54B
GLOBAL MARKET

According to IDC,
MORE THAN
59 ZETTABYTES (ZB)
OF DATA
were created and consumed globally in 2020.

This is forecasted to grow to
175 ZB BY 2025
HOW MUCH IS 1 ZB?
It is equivalent to **100 million HD movies worth of data.⁸**



¹ DATA GRAVITY INDEX DGX™ quantifies and predicts the intensity and gravitational force of enterprise data growth across more than 50 metros globally. The patent-pending formula, measured in gigabytes per second, provides a relative proxy for measuring data creation, aggregation and processing. Download full report.

² <https://rejournal.com/chicago-named-number-two-data-center-market-in-the-world/>

³ <https://datacenterfrontier.com/downtown-chicago-market-connectivity/>

⁴ <https://rejournal.com/chicago-named-number-two-data-center-market-in-the-world/>

⁵ <https://info.siteselectiongroup.com/blog/the-chicago-region-is-a-dominant-player-in-the-us-data-center-market>

⁶ <https://www.us.jll.com/en/trends-and-insights/research/data-center-outlook>

⁷ <https://www.gartner.com/en/newsroom/press-releases/2020-10-07-gartner-says-worldwide-data-center-infrastructure-spending-to-grow-6-percent-in-2021>

⁸ According to IDC, more than 59 zettabytes (ZB) of data were created and consumed globally in 2020 and this is forecasted to grow to 175 ZB by 2025. How much is 1 ZB? It is equivalent to 100 million HD movies worth of data.